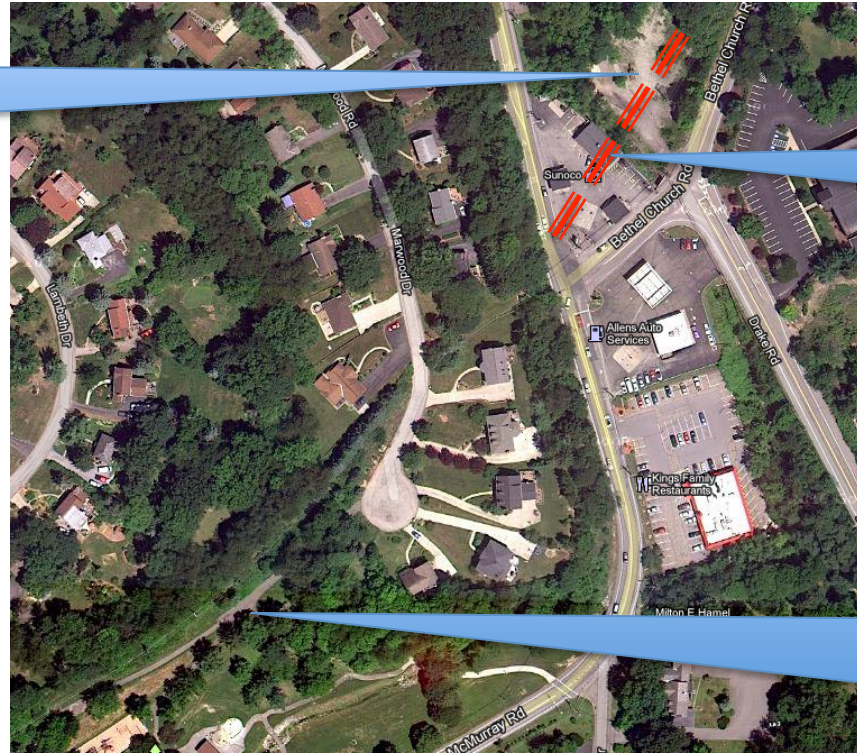


Location of
former
Drake Loop



Location of
former
Drake Trestle

My photo was
taken here,
Looking
northeast
(north is up)



Caption from davesrailpix.com: "3761 on fantrip on Washington interurban line, 1940s. Bill Volkmer collection"



Photo by Bob Iannucci, July, 2011. Location: Wiltshire Park Upper St. Clair, just southwest of former Drake Trestle.

Note hillside (left of photo), downslope (right of photo)